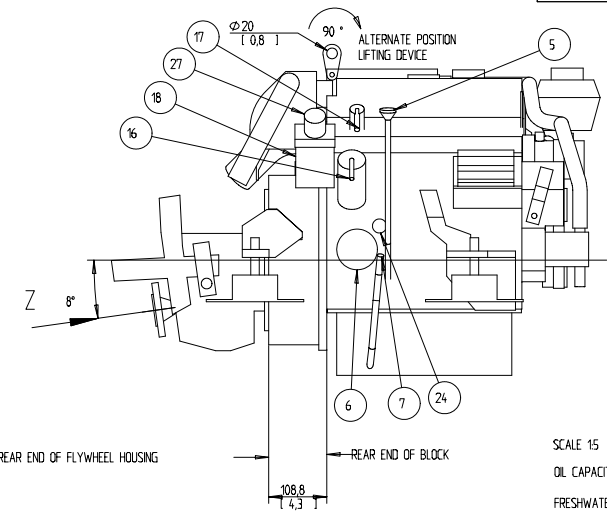
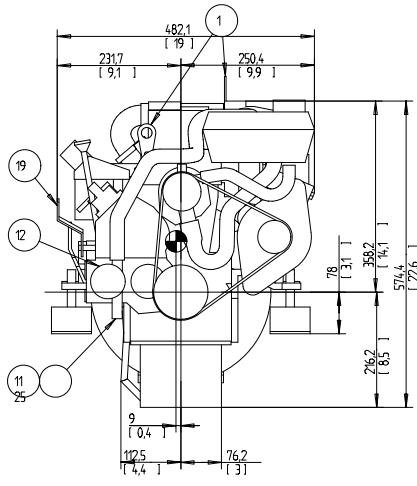
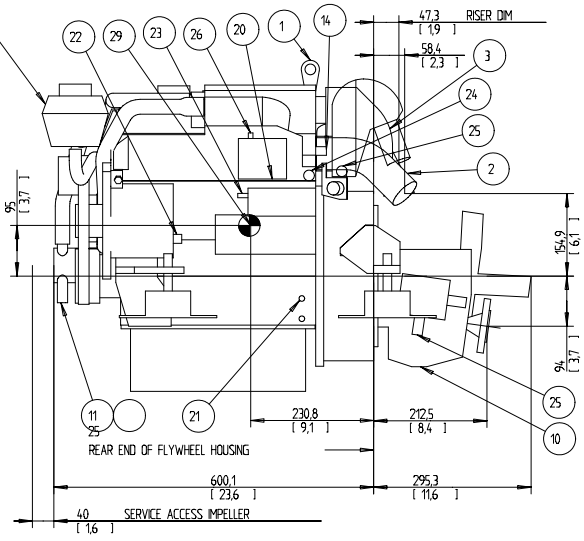


EXPANSION TANK CAN BE BULK HEAD MOUNTED
THEN USE HOSE Ø75 943366 AND Ø16 952969

Customer Name DBM S.p.A.	Order description Address P/O	D 1 3 0301	Released Date
-----------------------------	-------------------------------------	------------	------------------



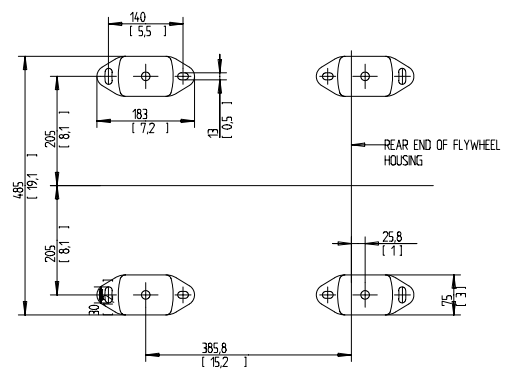
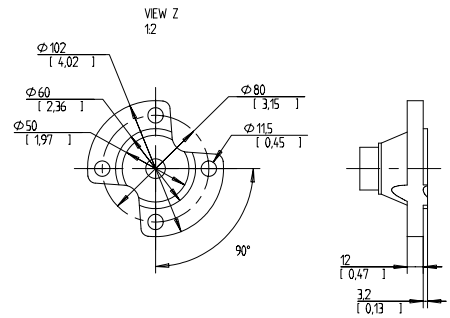
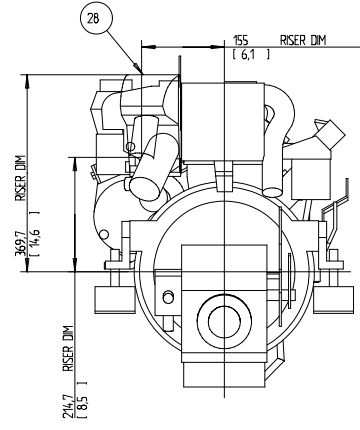
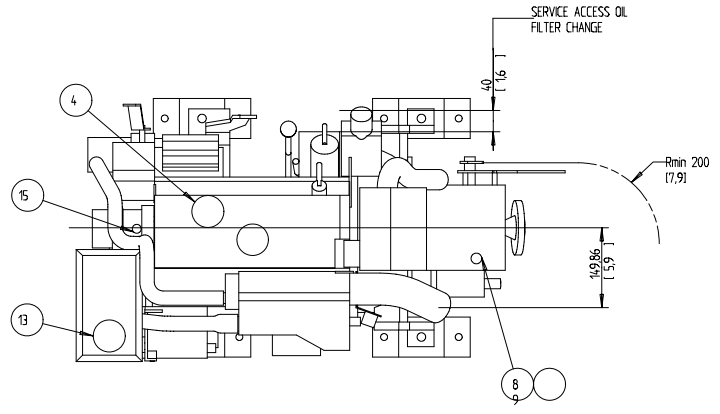
SCALE 1:5

OIL CAPACITY INCLUDING OIL FILTER: 5.7 LITERS
FRESHWATER SYSTEM CAPACITY: 6.4 LITERS

WEIGHTS:
DRY 161 kg
OIL & WATER 169 kg

DIMENSION IN MILLIMETRES AND (INCHES)

NR	ITEM
1	LIFTING DEVICE
2	EXHAUST ELBOW FOR HOSE ID 45(1.75)
3	AIR FILTER (SILENCER)
4	OIL FILLING
5	OIL DIPSTICK ENGINE
6	OIL FILTER
7	OIL DRAIN (WITH PUMP) ENGINE ID 8 (0.35)
8	OIL DIPSTICK REVERSE GEAR
9	OIL FILLER CAP REVERSE GEAR
10	OIL DRAIN REVERSE GEAR
11	SEAWATER INLET FOR HOSE ID 190(7.5)
12	SEA WATER PUMP
13	WATER FILLER CAP FRESH WATER
14	HOTWATER OUTLET
15	HOTWATER INLET
16	FUEL CONNECTION FOR HOSE ID 10 (3/8)
17	FUEL RETURN CONNECTION FOR HOSE ID 10 (3/8)
18	FUEL FILTER
19	SPEED CONTROL LEVER
20	CONNECTION BOX FOR EXTENSION CABLE
21	BATTERY MINUS (-) CONNECTION
22	PLUS (+) CONNECTION FOR CHARGING DISTRIBUTOR
23	STARTER BATTERY PLUS (+) CONNECTION
24	WATER DRAIN FRESH WATER
25	WATER DRAIN SEAWATER
26	AUTOMATIC FUSE RESET
27	HAND PRIMER PUMP
28	RISER (OPTIONAL)
29	CENTRE OF GRAVITY



Plus d'informations sur : www.dbmoteurs

VOLVO PENTA ENGINE DIMENSIONS D2-40/MS15A		DBM S.p.A. DIMENSIONAL DATA DRAWING METHODS STD 00-5000 AND STD 502560
The capacity, approvals and utilization of this document are valid only in the context of the contract to which it refers. Any other use, reproduction or modification without the express written consent of Volvo Penta is prohibited.	Document type DIMENSION DRAWING	Drawing No. 3591394
VOLVO PENTA	Drawing No. 3591394	Part No. 101